

Motion sensor touch screen ad player manual



Safety precaution

- 1) Adopting built-out power adapter DC +12V.
- 2) Turn off power before cleaning. Clean the unit with soft cloth; do not use liquid and gaseous detergent.
- 3) Do not put the unit near heater or caliduct, or stuffiness place
- 4) Only use the unit in condition that voltage is up to its required on the brand.
- 5) Do not make any liquid into the unit.

Specifications

POWER: DC 12V WORKING CURRENT: 3.5A CONSUMPTION: 42W
 CONTROL METHOD: REMOTE CONTROL AND TOUCH

PACKING LIST

AD PLAYERS	1PCS	MANUAL	1PCS
REMOTE CONTROL	1PCS	DC12V/6A POWER	1PCS

OPERATION:

1. Plugged in, blue screen boot screen (no card); if CF card or SD card inserted into the touch is advertising boot page, touch the area you need, then play the appropriate documents;
2. The file named: Advertising machine boot page is (A00) ", 9 sub-menu (A01, A02,A 03 ... A09)", so called Jiugongge main menu. 01-09 may be files, can be a folder, if the folder can be built "multi Main Menu."

A01	A02	A03
A04	A05	A06
A07	A08	A09

3. after the touching video frequency broadcasts, either in the broadcast, any touching, may or returns to the home page according to the definition way returns.after
4. timer function: According to remote control's on stop broadcast " ■ " the key, then presses the TIME key first, enters to fixed time the menu, one week seven day, according to needs to carry on differently every day fixed time, one day most may three groups fixed time.
- 5.COPY function:
 First step, establishes a COPY.txt document file with computer's memorandum (content not to limit, not only need to spatially), with waits the renewal the document to put in together the U plate; Second step, lets the advertisement machine be at the stopped state (, if in broadcast time presses on remote control ■ to stop key), inserts the U plate. This may treats the U plate in the renewal the document (including folder) the copy to the CF card or SD Cary, when the copy the available remote control choice "the formatted copy pattern" (be automatically the first CF/SD formatting, will then treat renewal document and folder carries on copy), also the available remote control choice "the cover copy pattern" (is document cover and different
- Note: The USB updating file suggests the visitor with the CF card, if with the SD card, the speed will be quite slow, will have the possibility not to be unstable.
6. defines voluntarily touches the region
 withdraws to the starting page-----Is healthy according to remote control's on stop -----Demonstrated according to"

666666" the screen on: "the establishment district", this time needs to carry on the touching district according to you according to the diagonal line, after the district completes-----Presses" 666666" on the screen to demonstrate" the preserved district" again-----After the power failure, again starting.

7. volume control: a.: May move with remote control's on VOL+/VOL- meets the volume; b: When document when broadcast, with the finger glide screen, will present the volume menu, may move through the glide meets.

8.Remote control:

in remote control's red power source close-down key, switches off the later machine close-down.

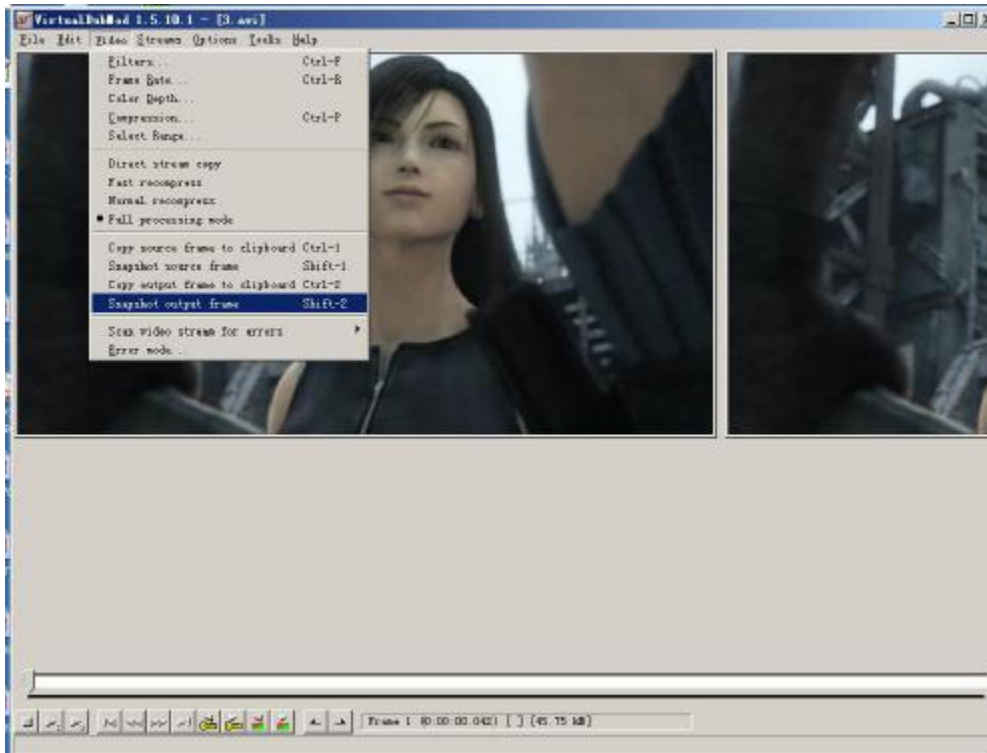
How to make the program:

prepare:

- 1、 Install RipPack SoftWare Package。 It's compressed, inside you can find Virtualdubmod。
- 2、 Install Codec.Pack SoftWare Package。 (note: Codec.Pack have many video decode tools which we will use when making)
- 3、 Install Photoshop software。
- 4、 Install Premiere software

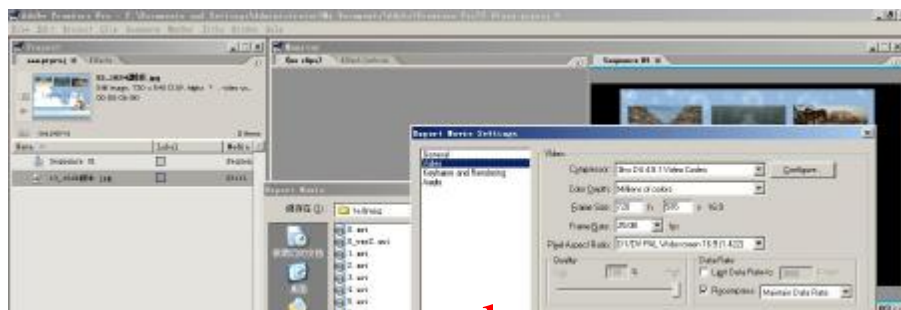
How to make the thumbnail picture:

- 1、 choose a picture from the advertisement program, use virtualdubmod to open a video file, then, like picture1choose a picture

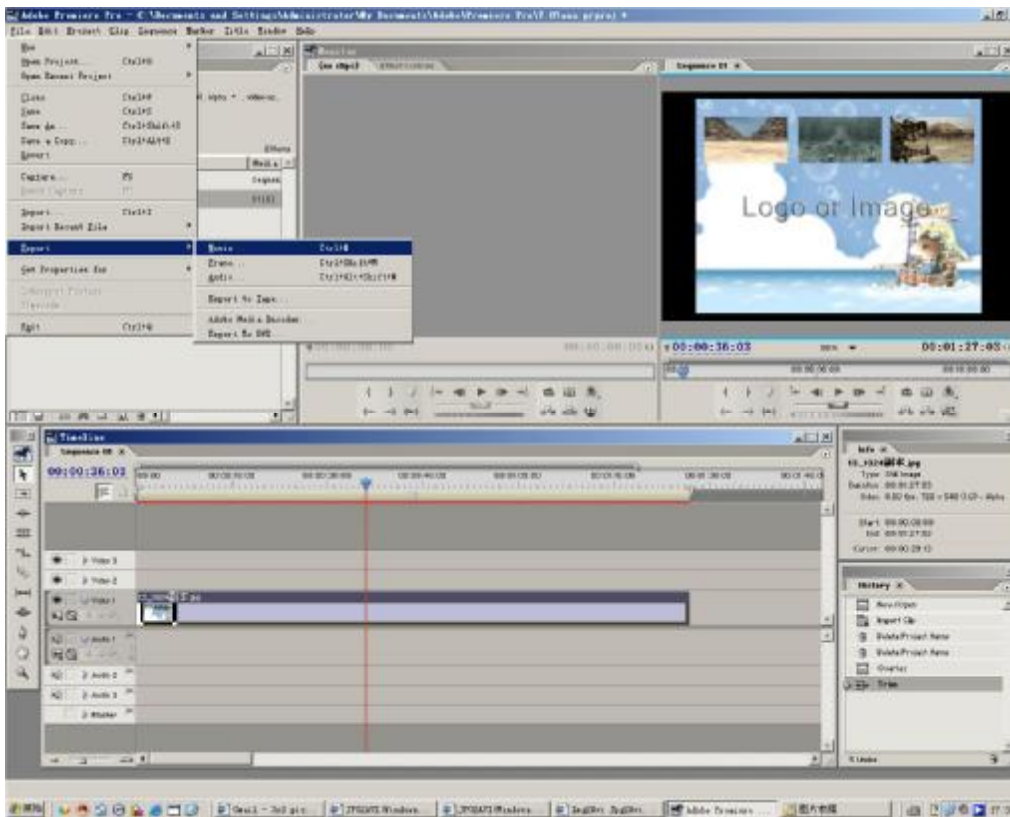


- 2、 Make the pictures as 3x3 format by photo shop, pls note to set the picture size as 640*480.

- 3、 Make nine-picture into according video (use premiere of abode, establish a project of 720*576 DVD PAL system first.



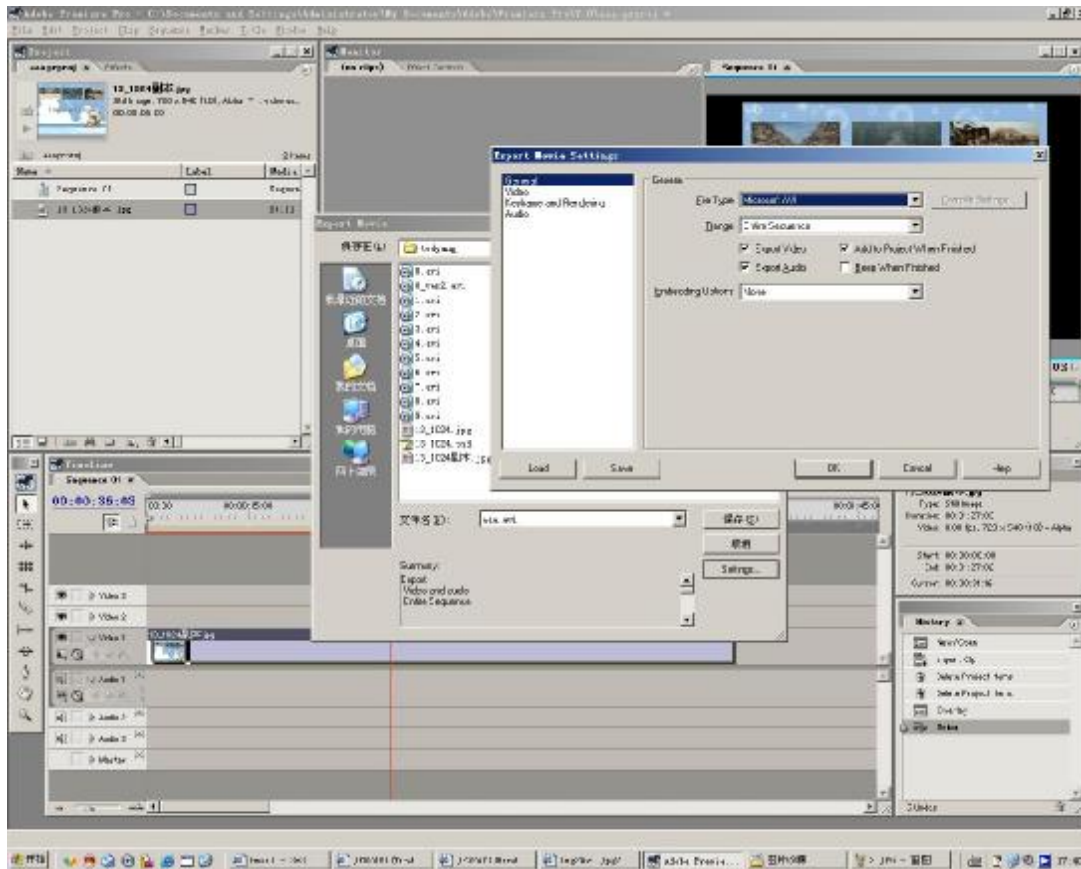
4、Lead the nine-picture made by step 2.



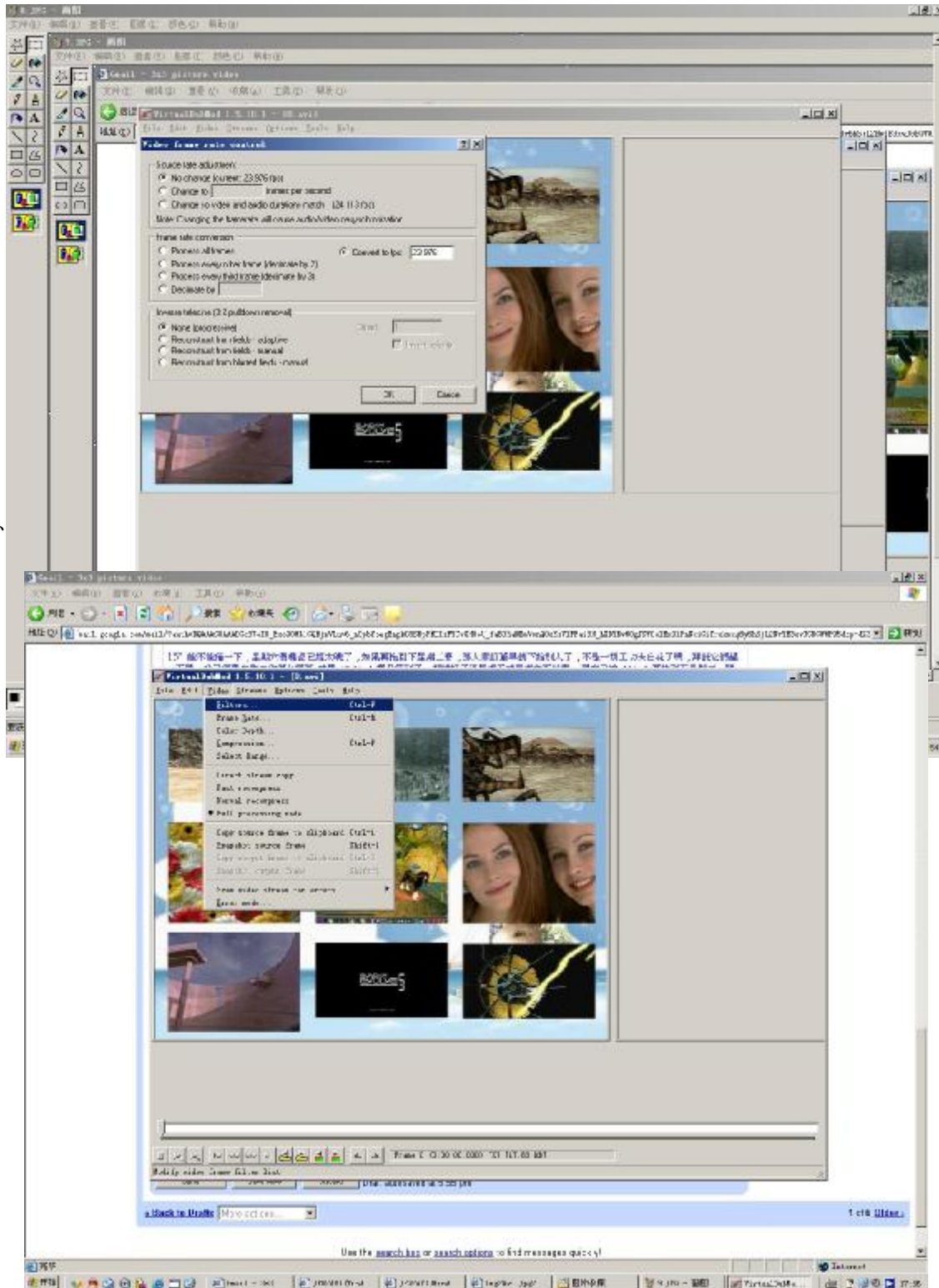
5、Take the leaded file into below time line, and take time bar to adjust the video playing time . then preview in the top right of the window .

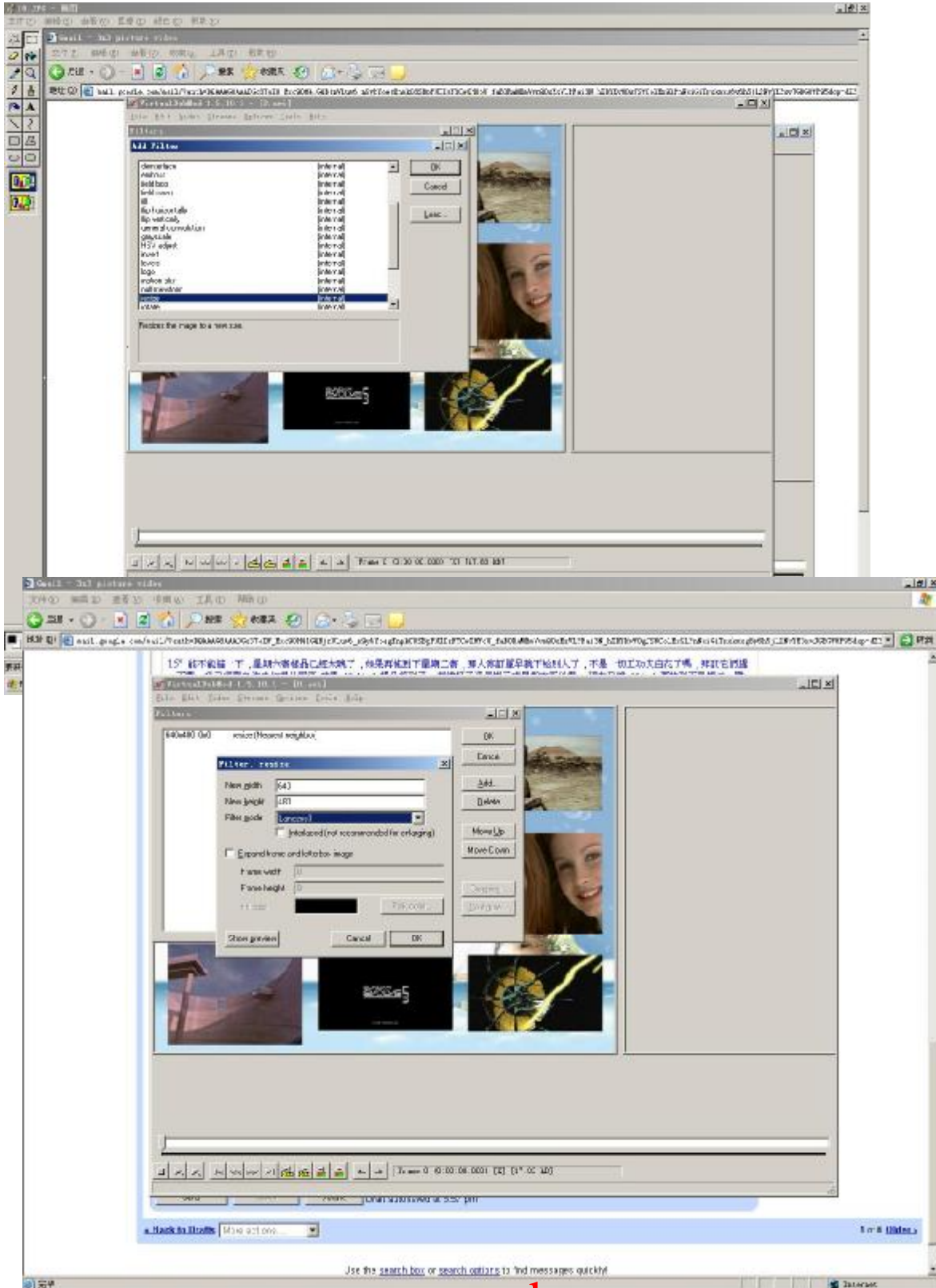


6、 Output as video file.



10、





11、 like below picture to cut off the black margin.

